



OCEANA  
RESIDENCES



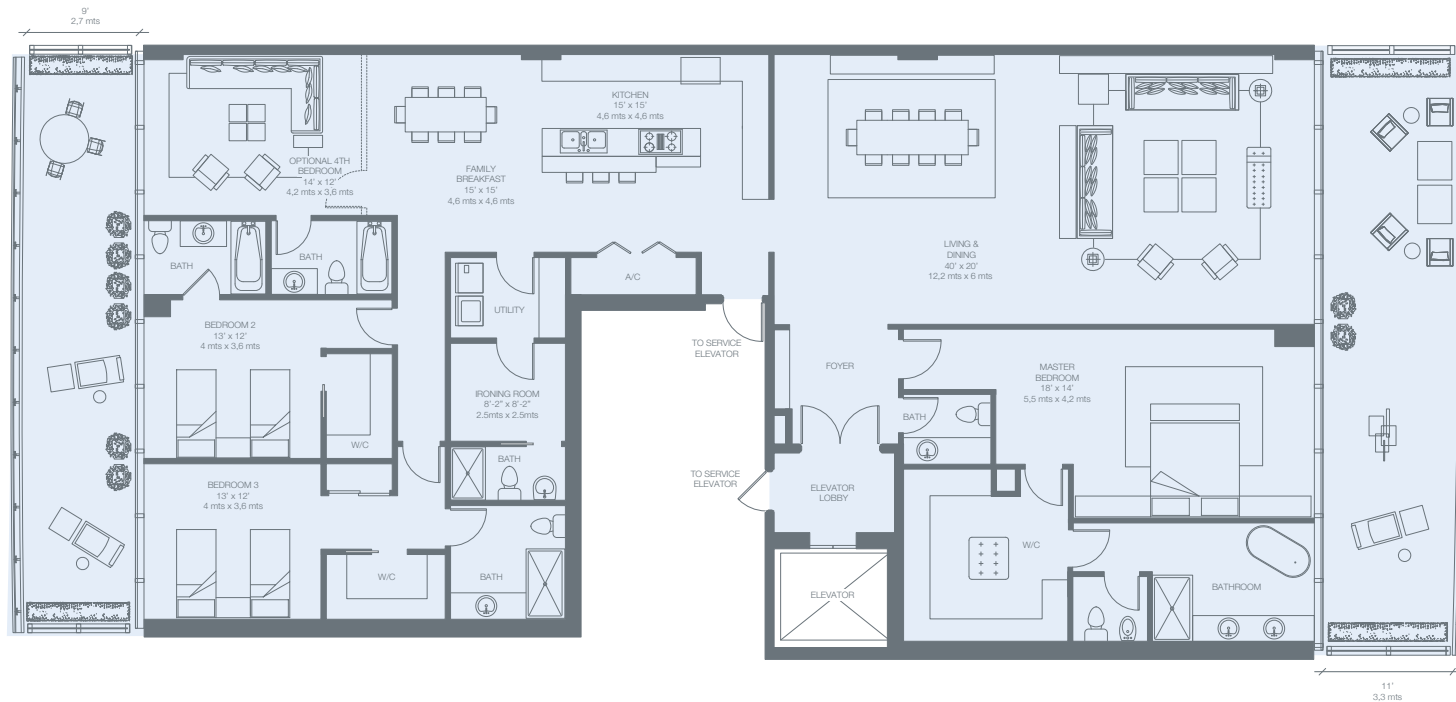
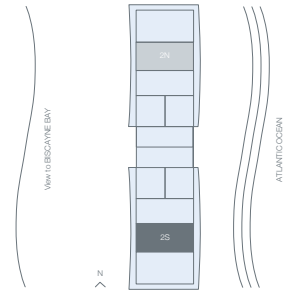
# O2S

## SOUTH TOWER

### 4th to 12th Floor

PRIVATE PARKING

RESIDENCE	3,600 sq. ft. 334 sq. mt.
TERRACE	892 sq. ft. 83 sq. mt.
Total	4,492 sq. ft. 387 sq. mt.



Stated dimensions are measured to the exterior boundaries of the exterior walls and the centerline of interior demising walls and in fact vary from the dimensions that would be determined by using the description and definition of the "Unit" set forth in the Declaration (which generally only includes the interior airspace between the perimeter walls and excludes interior structural components). For the square footage of the "Unit" calculated in the manner set forth in the Declaration, see Exhibit "3" to the Declaration. Additionally, measurements of rooms set forth on any floor plan are generally taken at the greatest points of each given room (as if the room were a perfect rectangle), without regard for any cutouts. Accordingly, the area of the actual room will typically be smaller than the product obtained by multiplying the stated length times width. All dimensions are approximate, and all floor plans and development plans are subject to change.

# O3S

## SOUTH TOWER

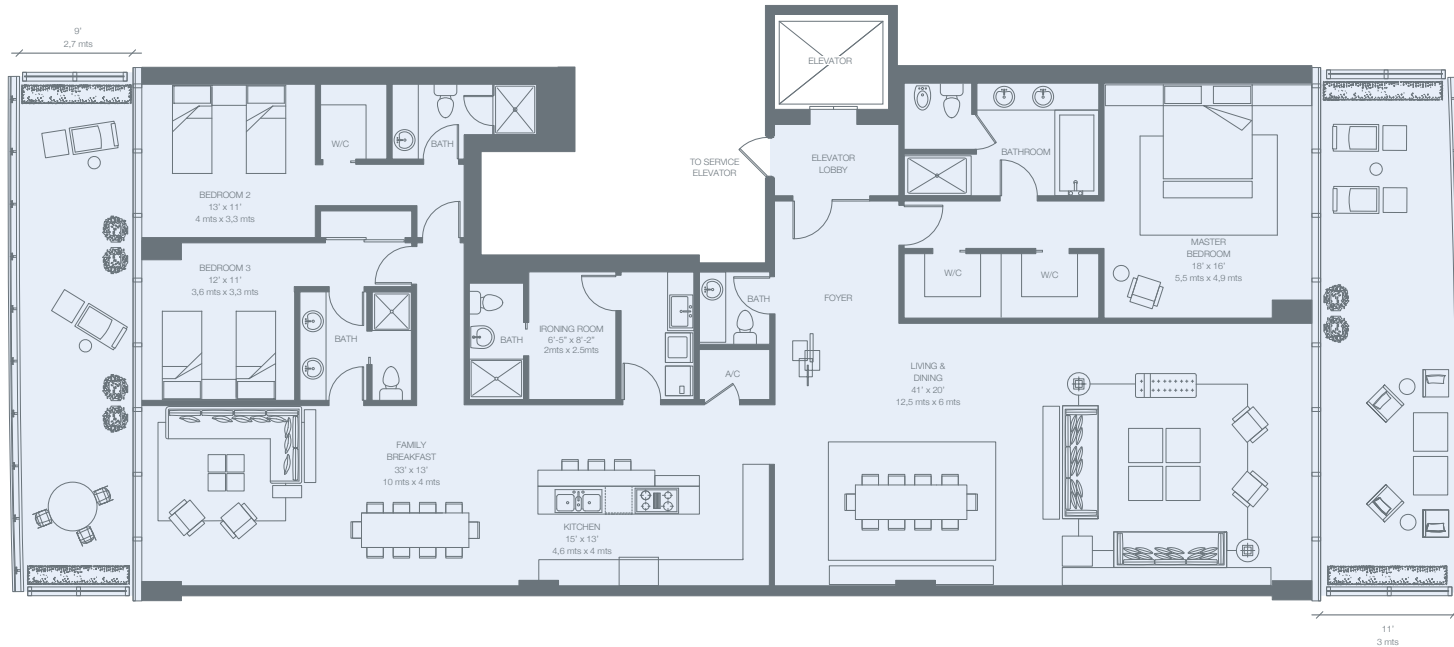
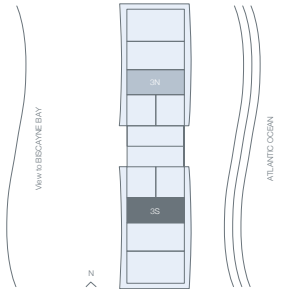
### 4th to 12th Floor

PRIVATE PARKING

RESIDENCE 3,226 sq. ft. 298 sq. mt.

TERRACE 778 sq. ft. 72 sq. mt.

Total 4,004 sq. ft. 370 sq. mt.



Stated dimensions are measured to the exterior boundaries of the exterior walls and the centerline of interior demising walls and in fact vary from the dimensions that would be determined by using the description and definition of the "Unit" set forth in the Declaration (which generally only includes the interior airspace between the perimeter walls and excludes interior structural components). For the square footage of the "Unit" calculated in the manner set forth in the Declaration, see Exhibit "3" to the Declaration. Additionally, measurements of rooms set forth on any floor plan are generally taken at the greatest points of each given room (as if the room were a perfect rectangle), without regard for any cutouts. Accordingly, the area of the actual room will typically be smaller than the product obtained by multiplying the stated length times width. All dimensions are approximate, and all floor plans and development plans are subject to change.

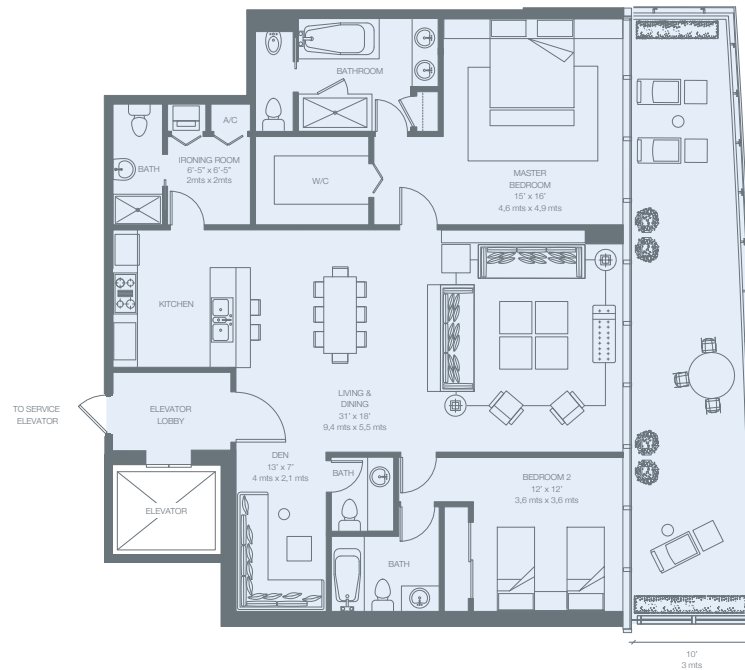
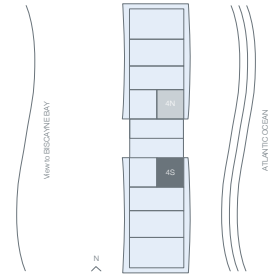
# 04S

SOUTH TOWER

*4th to 12th Floor*

PRIVATE PARKING

RESIDENCE	1,828 sq. ft. 170 sq. mt.
TERRACE	452 sq. ft. 42 sq. mt.
Total	2,280 sq. ft. 212 sq. mt.



Stated dimensions are measured to the exterior boundaries of the exterior walls and the centerline of interior demising walls and in fact vary from the dimensions that would be determined by using the description and definition of the "Unit" set forth in the Declaration (which generally only includes the interior airspace between the perimeter walls and excludes interior structural components). For the square footage of the "Unit" calculated in the manner set forth in the Declaration, see Exhibit "3" to the Declaration. Additionally, measurements of rooms set forth on any floor plan are generally taken at the greatest points of each given room (as if the room were a perfect rectangle), without regard for any cutouts. Accordingly, the area of the actual room will typically be smaller than the product obtained by multiplying the stated length times width. All dimensions are approximate, and all floor plans and development plans are subject to change.

# 05S

## SOUTH TOWER

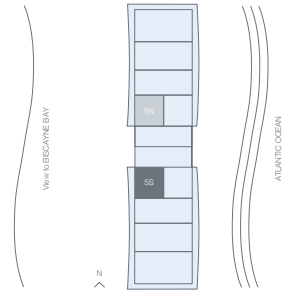
*4th to 12th Floor*

PRIVATE PARKING

RESIDENCE 1,885 sq. ft. 175 sq. mt.

TERRACE 498 sq. ft. 46 sq. mt.

Total 2,383 sq. ft. 221 sq. mt.



Stated dimensions are measured to the exterior boundaries of the exterior walls and the centerline of interior demising walls and in fact vary from the dimensions that would be determined by using the description and definition of the "Unit" set forth in the Declaration (which generally only includes the interior airspace between the perimeter walls and excludes interior structural components). For the square footage of the "Unit" calculated in the manner set forth in the Declaration, see Exhibit "3" to the Declaration. Additionally, measurements of rooms set forth on any floor plan are generally taken at the greatest points of each given room (as if the room were a perfect rectangle), without regard for any cutouts. Accordingly, the area of the actual room will typically be smaller than the product obtained by multiplying the stated length times width. All dimensions are approximate, and all floor plans and development plans are subject to change.

# 06S

## SOUTH TOWER

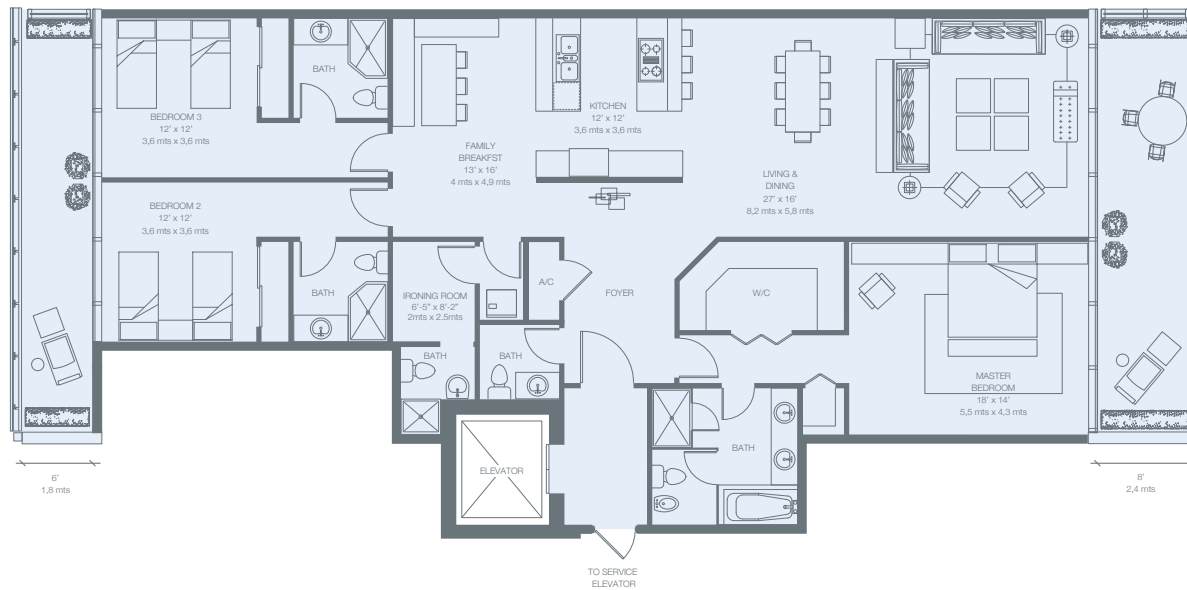
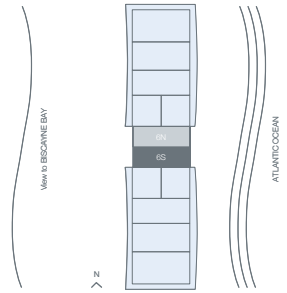
### 4th to 12th Floor

PRIVATE PARKING

RESIDENCE 2,406 sq. ft. 223 sq. mt.

TERRACE 443 sq. ft. 41 sq. mt.

Total 2,849 sq. ft. 264 sq. mt.



Stated dimensions are measured to the exterior boundaries of the exterior walls and the centerline of interior demising walls and in fact vary from the dimensions that would be determined by using the description and definition of the "Unit" set forth in the Declaration (which generally only includes the interior airspace between the perimeter walls and excludes interior structural components). For the square footage of the "Unit" calculated in the manner set forth in the Declaration, see Exhibit "3" to the Declaration. Additionally, measurements of rooms set forth on any floor plan are generally taken at the greatest points of each given room (as if the room were a perfect rectangle), without regard for any cutouts. Accordingly, the area of the actual room will typically be smaller than the product obtained by multiplying the stated length times width. All dimensions are approximate, and all floor plans and development plans are subject to change.